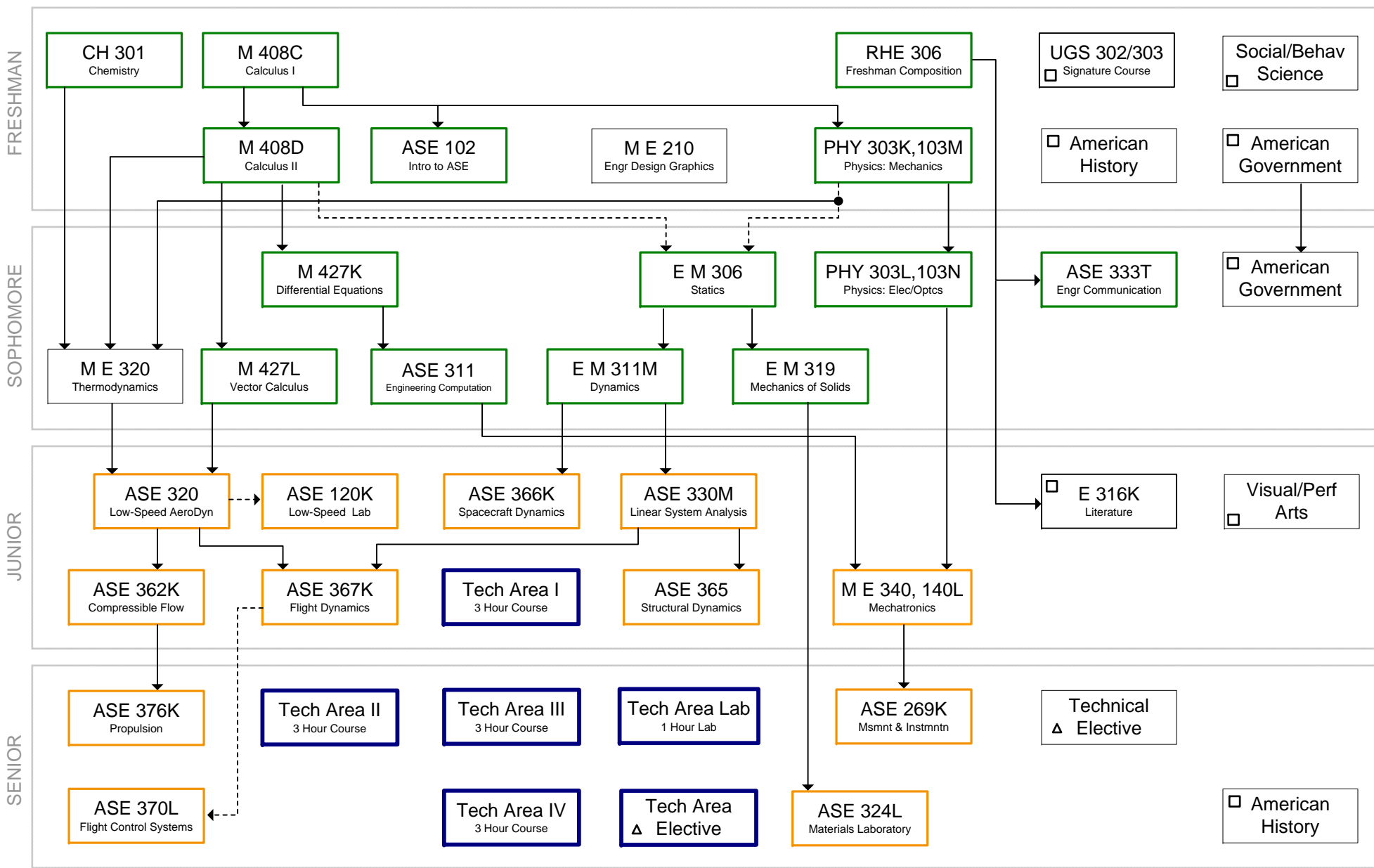


2012-2014 AEROSPACE ENGINEERING CURRICULUM

PREREQUISITE FLOW CHART



—▶ Required Prerequisite
 - - -▶ Credit or Registration Required

Basic Sequence Course
Major Sequence Course

C- or better required in ALL coursework except Core Curriculum Requirements

□ Core Curriculum Requirement; find approved classes in Catalog
 Δ Check Prerequisite in Catalog

AEROSPACE ENGINEERING

2012-2014 CATALOG

Suggested Arrangement of Courses for Eight Semester Program
128 credit hours

First Year

<u>Fall Semester</u>	<u>Semester Hours</u>	<u>Spring Semester</u>	<u>Semester Hours</u>
CH 301, <i>Principles of Chemistry I</i>	3	ASE 102, <i>Introduction to Aerospace Engineering</i>	1
M 408C, <i>Differential and Integral Calculus</i>	4	M E 210, <i>Engineering Design Graphics</i>	2
RHE 306, <i>Rhetoric and Writing</i> (English Composition)	3	M 408D, <i>Sequences, Series, and Multivariable Calculus</i>	4
UGS 302 or UGS 303 (First-Year Signature Course) *	3	PHY 303K, <i>Engineering Physics I</i>	3
Approved Social and Behavioral Science *	3	PHY 103M, <i>Laboratory for Physics 303K</i>	1
TOTAL.....	16	American History *	3
		GOV 310L (American and Texas Government) *	3
		TOTAL	17

Second Year

<u>Fall Semester</u>	<u>Semester Hours</u>	<u>Spring Semester</u>	<u>Semester Hours</u>
ASE 333T, <i>Engineering Communication</i>	3	ASE 311, <i>Engineering Computation</i>	3
E M 306, <i>Statics</i>	3	E M 311M, <i>Dynamics</i>	3
M 427K, <i>Advanced Calculus for Applications I</i>	4	E M 319, <i>Mechanics of Solids</i>	3
PHY 303L, <i>Engineering Physics II</i>	3	M E 320, <i>Applied Thermodynamics</i>	3
PHY 103N, <i>Laboratory for Physics 303L</i>	1	M 427L, <i>Advanced Calculus for Applications II</i>	4
GOV 312L (American and Texas Government) *	3	TOTAL	16
TOTAL.....	17		

Third Year

<u>Fall Semester</u>	<u>Semester Hours</u>	<u>Spring Semester</u>	<u>Semester Hours</u>
ASE 320, <i>Low-Speed Aerodynamics</i>	3	ASE 362K, <i>Compressible Flow</i>	3
ASE 120K, <i>Low-Speed Aerodynamics Laboratory</i>	1	ASE 365, <i>Structural Dynamics</i>	3
ASE 330M, <i>Linear System Analysis</i>	3	ASE 367K, <i>Flight Dynamics</i>	3
ASE 366K, <i>Spacecraft Dynamics</i>	3	M E 340, <i>Mechatronics</i>	3
E 316K, <i>Masterworks of Literature</i> (Humanities) *	3	M E 140L, <i>Mechatronics Laboratory</i>	1
Approved Visual and Performing Arts *	3	Technical Area Course	3
TOTAL.....	16	TOTAL	16

Fourth Year

<u>Fall Semester</u>	<u>Semester Hours</u>	<u>Spring Semester</u>	<u>Semester Hours</u>
ASE 269K, <i>Measurements and Instrumentations</i>	2	ASE 370L, <i>Flight Control Systems</i>	3
ASE 376K, <i>Propulsion</i>	3	ASE 324L, <i>Aerospace Materials Laboratory</i>	3
Technical Area Courses	7	Technical Area Course	3
Technical Elective.....	3	Technical Area Elective.....	3
TOTAL.....	15	American History *	3
		TOTAL	15

NOTES:

- C- or better required in **all** coursework except Core Curriculum (*) requirements.
- Check with the Undergraduate Office (WRW 215) for a list of approved technical elective courses.