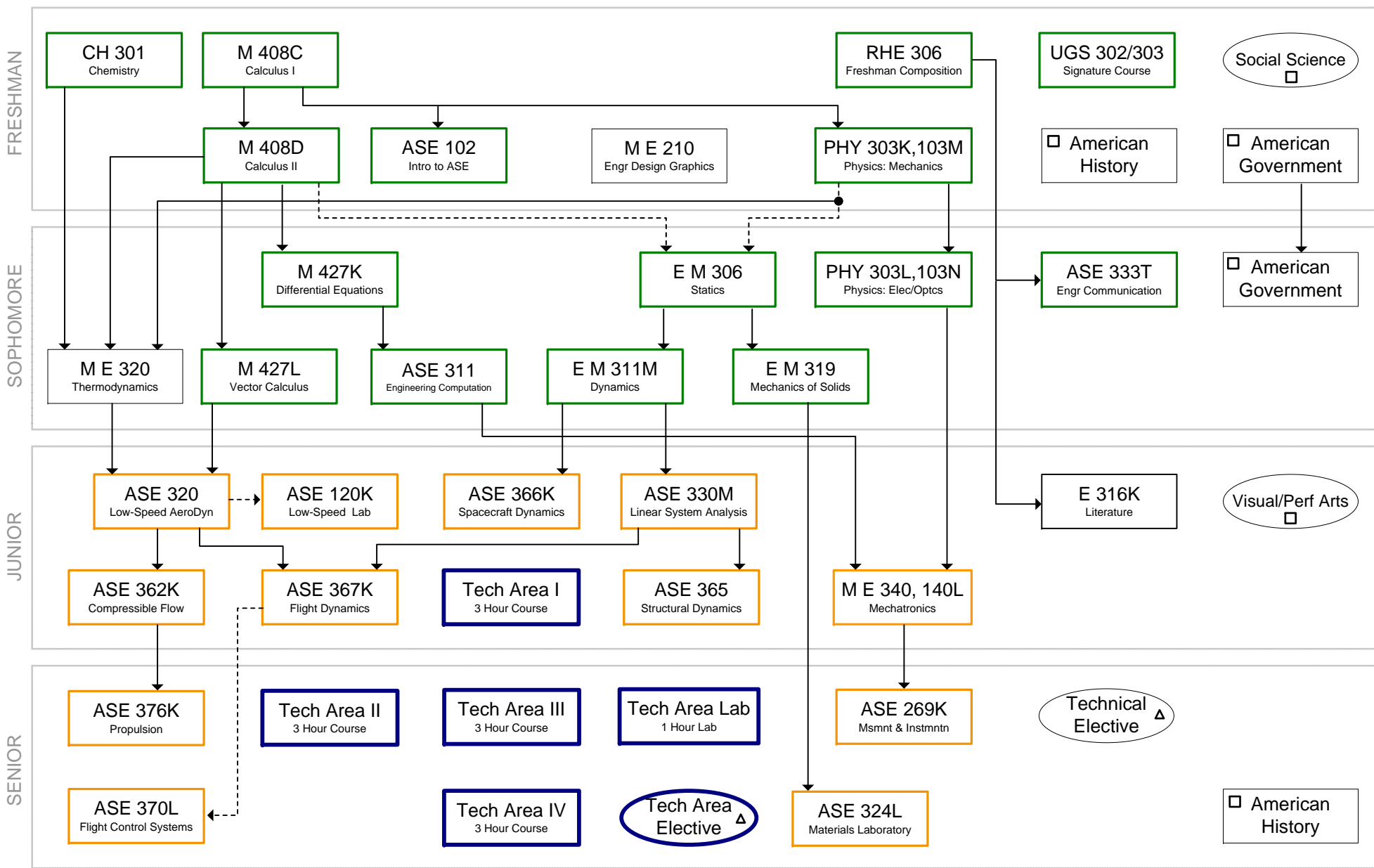


2010-2012 AEROSPACE ENGINEERING CURRICULUM

PREREQUISITE FLOW CHART



- | | | | |
|-----------------|---------------------------------|-----------------------|---|
| Required Course | Required Prerequisite | Basic Sequence Course | Core Curriculum Requirement; find approved classes in Catalog |
| Elective Course | Credit or Registration Required | Major Sequence Course | Check Prerequisite in Catalog |

C- or better required in ALL coursework

AEROSPACE ENGINEERING

2010-2012 CATALOG

Suggested Arrangement of Courses for Eight Semester Program
128 credit hours

First Year

<u>Fall Semester</u>	<u>Semester Hours</u>	<u>Spring Semester</u>	<u>Semester Hours</u>
CH 301, <i>Principles of Chemistry I</i>	3	ASE 102, <i>Introduction to Aerospace Engineering</i>	3
M 408C, <i>Differential and Integral Calculus</i>	4	ME 210, <i>Engineering Design Graphics</i>	3
RHE 306, <i>Rhetoric and Composition</i>	3	M 408D, <i>Sequences, Series, and Multivariable Calculus</i>	4
Approved Social Science or Fine Arts/Humanities Elective.....	3	PHY 303K, <i>Engineering Physics I</i>	3
<u>or</u> Approved Visual and Performing Arts Elective		PHY 103M, <i>Laboratory for Physics 303K</i>	1
UGS 302, <i>First-Year Signature Course-W</i>	3	American History	3
<u>or</u> UGS 303, <i>First-Year Signature Course</i>		American Government	3
TOTAL.....	16	TOTAL.....	17

Second Year

<u>Fall Semester</u>	<u>Semester Hours</u>	<u>Spring Semester</u>	<u>Semester Hours</u>
ASE 333T, <i>Engineering Communication-W</i>	3	ASE 311, <i>Engineering Computation</i>	3
EM 306, <i>Statics</i>	3	EM 311M, <i>Dynamics</i>	3
M 427K, <i>Advanced Calculus for Applications I</i>	4	EM 319, <i>Mechanics of Solids</i>	3
PHY 303L, <i>Engineering Physics II</i>	3	ME 320, <i>Applied Thermodynamics</i>	3
PHY 103N, <i>Laboratory for Physics 303L</i>	1	M 427L, <i>Advanced Calculus for Applications II</i>	4
American Government.....	3	TOTAL	16
TOTAL.....	17		

Third Year

<u>Fall Semester</u>	<u>Semester Hours</u>	<u>Spring Semester</u>	<u>Semester Hours</u>
ASE 320, <i>Low-Speed Aerodynamics</i>	3	ASE 362K, <i>Compressible Flow</i>	3
ASE 120K, <i>Laboratory for ASE 320</i>	1	ASE 365, <i>Structural Dynamics</i>	3
ASE 330M, <i>Linear System Analysis</i>	3	ASE 367K, <i>Flight Dynamics</i>	3
ASE 366K, <i>Spacecraft Dynamics</i>	3	ME 340, <i>Mechatronics</i>	3
E 316K, <i>Masterworks of Literature</i>	3	ME 140L, <i>Laboratory for ME 340</i>	1
Approved Social Science Elective	3	Technical Area Course	3
<u>or</u> Approved Visual and Performing Arts Elective		TOTAL	16
TOTAL.....	16		

Fourth Year

<u>Fall Semester</u>	<u>Semester Hours</u>	<u>Spring Semester</u>	<u>Semester Hours</u>
ASE 269K, <i>Measurements and Instrumentations</i>	2	ASE 370L, <i>Flight Control Systems</i>	3
ASE 367K, <i>Propulsion</i>	3	ASE 324L, <i>Aerospace Materials Laboratory</i>	3
Technical Area Courses	7	Technical Area Course	3
Technical Elective.....	3	Technical Area Elective.....	3
TOTAL.....	15	American History	3
		TOTAL	15

>> Check with the Undergraduate Office (WRW 215) for a list of approved elective courses.