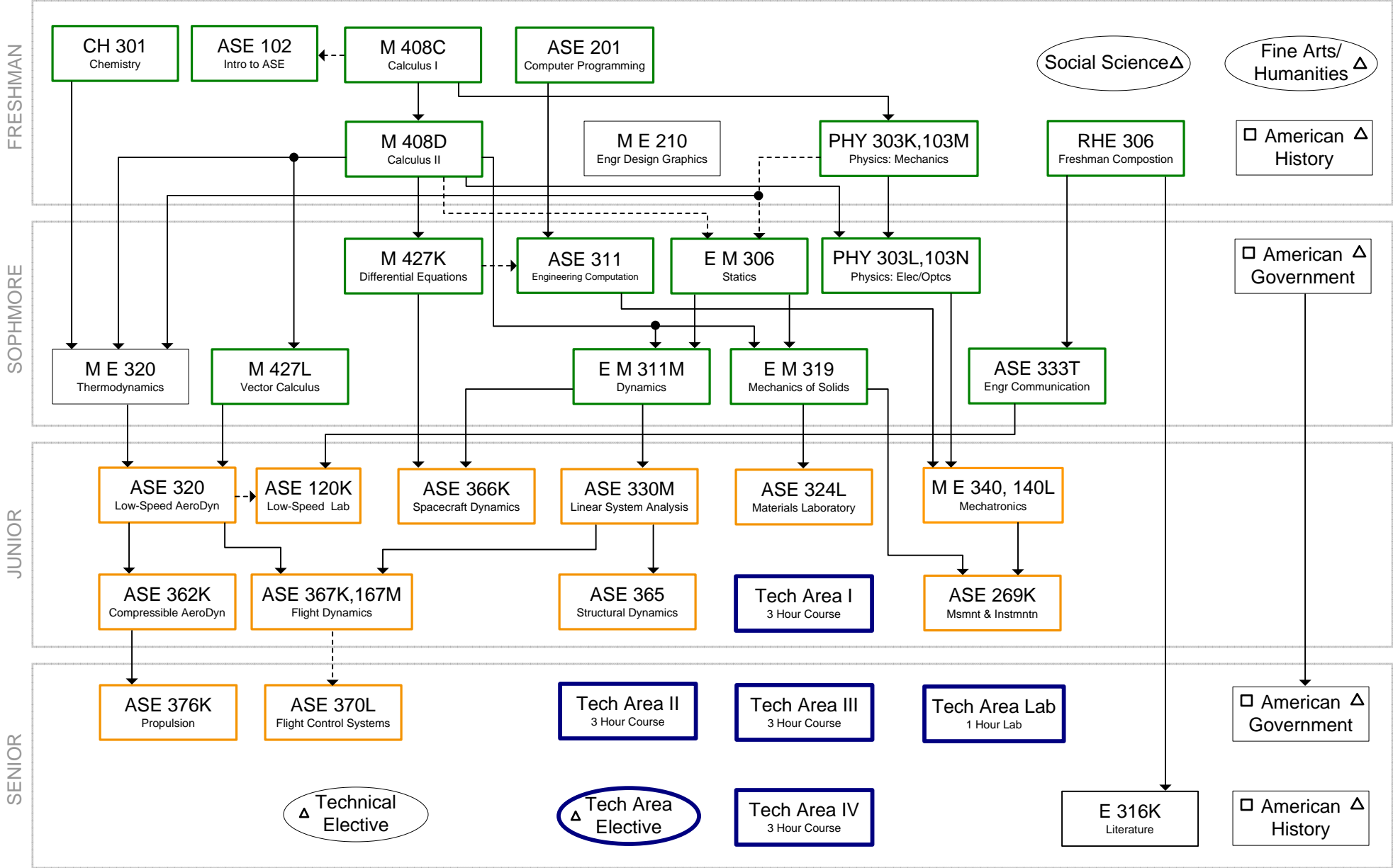


2008-2010 AEROSPACE ENGINEERING CURRICULUM

PREREQUISITE FLOW CHART

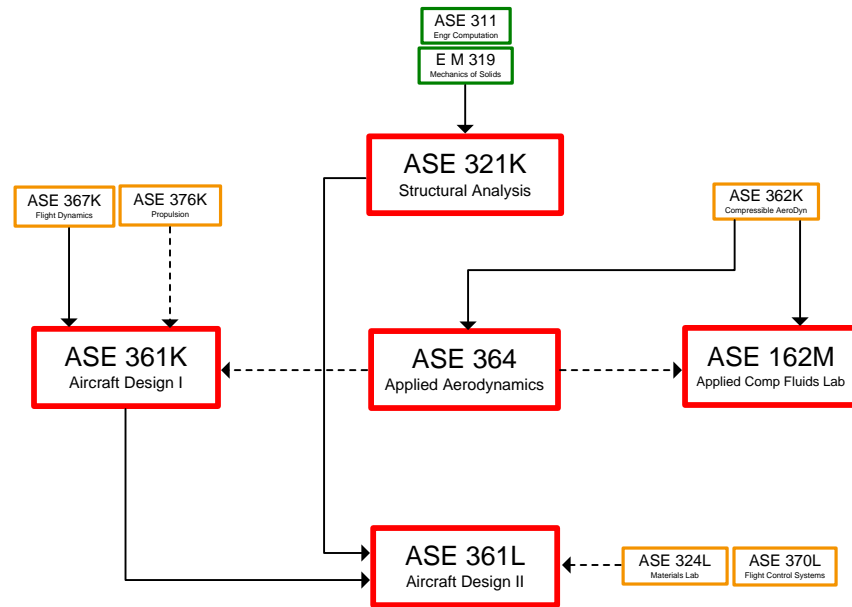


- Required Course
- Elective Course
- Required Prerequisite
- Credit or Registration Required
- Basic Sequence Course
- Major Sequence Course
- C or better required in ALL coursework
- Courses in Hist. and Govt. must fulfill legislative requirement
- △ Check Prerequisite in Catalog

Pre-Approved Atmospheric Area Electives:

- ASE 355, Aeroelasticity
- ASE 357, Mechanics of Composite Materials
- ASE 346, Viscous Fluid Flow
- ASE 339, Advanced Strength of Materials
- M E 355K, Engineering Vibrations
- ASE 225M/325L, Cooperative Engineering
- ASE 128, ASE Projects Laboratory

Atmos Area Elective



Pre-Approved Space Area Electives:

- ASE 372N, Satellite Navigation
- ASE 357, Mechanics of Composite Materials
- ASE 346, Viscous Fluid Flow
- ASE 339, Advanced Strength of Materials
- M E 372J, Robotics and Automation
- ASE 225M/325L, Cooperative Engineering
- ASE 128, ASE Projects Laboratory

Space Area Elective

